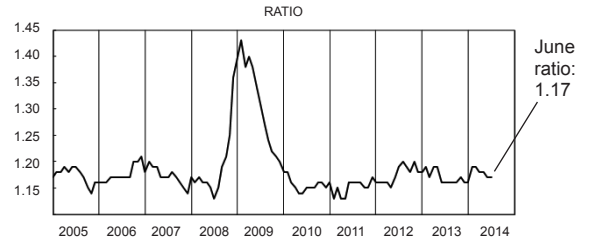


Monthly Wholesale Trade Data

Wholesale revenues in June were \$454.4 billion, up 0.2 percent from the revised May level and up 6.5 percent from June 2013. June sales of durable goods were up 1.4 percent from last month and up 6.6 percent from a year ago. Sales of nondurable goods were down 0.7 percent from May, but up 6.5 percent from last June.

Inventories. Inventories were \$533.5 billion at the end of June, up 0.3 percent from the revised May level and up 7.9 percent from June 2013. June inventories of durable goods were up 0.7 percent from last month and were up 8.8 percent from a year ago. Inventories of nondurable goods were down 0.2 percent from May, but were up 6.4 percent from last June.

Monthly Inventories/Sales Ratios
of Merchant Wholesalers: 2005-2014
(Estimates adjusted for seasonal and trading-day differences, but not for price changes)



Source: U.S. Census Bureau

Inventories/Sales Ratio. The June inventories/sales ratio for merchant wholesalers was 1.17. The June 2013 ratio was 1.16.

Sales and Inventories Trends: June 2014

NAICS Code	Business Type	Sales \$Millions	Inventory \$Millions	Stock/Sales Ratio	Percent Change Sales 5/14-6/14	Percent Change Sales 6/13-6/14	Percent Change Inventory 5/14-6/14	Percent Change Inventory 6/13-6/14
42	U.S. Total	454,447	533,486	1.17	0.2	6.5	0.3	7.9
423	Durable	209,693	329,446	1.57	1.4	6.6	0.7	8.8
4231	Automotive	35,308	54,165	1.53	2.1	6.4	-0.3	9.8
4232	Furniture & Home Furnishings	5,229	8,710	1.67	0.2	0.4	1.0	7.4
4233	Lumber & Other Construction Materials	10,414	15,278	1.47	1.5	10.4	0.9	9.2
4234	Prof. & Commercial Equip. & Supplies	40,022	41,061	1.03	1.8	6.9	0.3	6.0
42343	Computer Equipment & Software	22,561	18,398	0.82	0.5	3.8	1.8	6.5
4235	Metals & Minerals	13,889	29,437	2.12	1.1	12.4	3.2	11.4
4236	Electrical Goods	36,447	37,191	1.02	0.8	2.5	0.6	6.9
4237	Hardware, Plumbing, & Heating Equipment	9,985	19,605	1.96	-0.9	1.7	1.1	4.9
4238	Machinery, Equipment & Supplies	39,428	96,315	2.44	0.6	12.3	0.3	12.5
4239	Miscellaneous Durable	18,971	27,684	1.46	3.5	1.6	1.1	2.3
424	Nondurable Goods	244,754	204,040	0.83	-0.7	6.5	-0.2	6.4
4241	Paper & Paper Products	8,121	7,544	0.93	2.4	9.2	1.1	5.3
4242	Drugs	40,951	43,447	1.06	0.4	11.9	-0.2	19.3
4243	Apparel, Piece Goods & Notions	12,649	24,848	1.96	-0.2	9.2	0.3	7.7
4244	Groceries & Related Products	51,699	33,359	0.65	-0.8	5.5	0.7	3.3
4245	Farm-product Raw Materials	21,033	20,926	0.99	-8.1	-1.0	-5.3	-0.6
4246	Chemicals & Allied Products	11,051	12,823	1.16	-1.4	8.8	2.6	7.0
4247	Petroleum & Petroleum Products	66,983	21,570	0.32	1.0	6.6	1.7	0.2
4248	Beer, Wine & Distilled Beverages	10,837	14,716	1.36	-0.2	3.3	0.0	3.0
4249	Miscellaneous Nondurable Goods	21,430	24,807	1.16	-1.2	4.4	-1.0	3.9

U.S. Bureau of the Census, Current Business Reports, Monthly Wholesale Trade, Sales and Inventories Series: MDM compilation and analysis. Adjusted for seasonal and trading day differences. Figures for sales and inventories are preliminary adjusted estimates.